

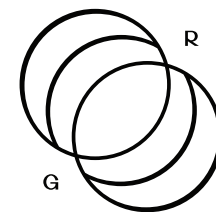


PAVILION



VOLUME ONE
TWENTY TWENTY THREE

PAVILION



VOLUME ONE
TWENTY TWENTY THREE

AN IMAGINED SPACE DESIGNED
BY ROSS GARDAM, A STRUCTURE
FOR THE MANIFESTATION OF
IDEAS AND THE PRESENTATION
OF CURRENT AND FUTURE
DESIGNED FORMS⁽⁰¹⁾ AND
EXPERIENCES.

AN EVOLVING⁽⁰²⁾ SPATIAL
EXPERIENCE THAT DEFIES
TIME AND PLACE PROVIDING
AN EVOLVING CONCEPTUAL
CONTEXT REMOVED FROM
EXISTING CONVENTIONS. SET
AMONGST DENSE AUSTRALIAN
BUSHLAND⁽⁰³⁾, PAVILION IS
THE MIDDLE SPACE BETWEEN
PHYSICAL AND DIGITAL, THE
POSSIBLE AND IMAGINED, AN
OPEN ENDED EXPLORATION OF
THE CONNECTED NATURE OF
BEINGS, OBJECTS⁽⁰⁴⁾ AND PLACE.

(01, 04) PP. 14-44: VOLUME ONE

(02) REFRESHED WITH NEW
SEASONS & COLLABORATIONS

(03) INSPIRED BY THE NATURAL
LANDSCAPE & FLORA OF
VICTORIA, AUSTRALIA



BETWEEN THE DIGITAL AND PHYSICAL

00

THE SPACE BETWEEN

PAVILION WAS CREATED AS A UNIVERSAL SPACE FOR EXHIBITING THE EXPANDING PORTFOLIO OF FURNITURE AND LIGHTING BY AUSTRALIAN DESIGNER ROSS GARDAM. THE PURPOSE IS TO ENABLE PEOPLE TO TRANSPORT THEMSELVES TO A SPATIAL EXPERIENCE THAT DEFIES TIME AND PLACE, SHOWCASING AN ARRAY OF ORIGINAL IDEAS THAT QUESTION CONVENTION. METICULOUSLY-CRAFTED CONCEPTS THAT EXPLORE THE EMOTIONAL CONNECTION BETWEEN PEOPLE, OBJECTS AND THEIR SURROUNDINGS.

The inspiration behind Pavilion stems from Gardam's long-standing fascination with Brutalist architecture. In particular, the honesty and monolithic sense of grandeur. The façade is open, expansive and inviting, drawing focus first to the curved entry, followed by the beams which compel people to continue through the interior until arriving at the internal courtyard of the atrium. The atrium, in turn, transitions to the Australian bushland outside.

Emphasis was put on minimalism, using concrete in situ as the base material. Creating contrast was key, seen in the curved roof detail, which softens the walls and beams leading to the atrium. To establish an intuitive sense of flow, the horizontal planes, beams and external uprights were secured in place via a physical cut-out of the façade for the beams to sit. Each element seamlessly locks together through this singular interaction – ultimately unifying the building.

As a space providing scale and form for staging Gardam's designs, careful consideration was given to curating the furniture and lighting inside – including the journey to discover them. Reflecting Gardam's belief that objects are not meant to exist in isolation, but rather in relation to ourselves and our surroundings. To this end, the interior consists of four rooms with interconnected views to one another, as well as to the internal courtyard and the exterior. This simultaneous view of each adjacent space adds to the intrigue, triggering curiosity for people to explore the entire interior, leading out to the Australian landscape.

Intrinsic to the architecture of Pavilion was the idea of incorporating the nature outside – inside, as part of the narrative. The external environment reveals the location as unmistakably Australian, replete with eucalyptus trees, native ferns and other foliage surrounding the exterior, providing unique portals from the oversized apertures of Pavilion. The landscape flows up to the footing of the building and into the open atrium, thus softening the relationship between Pavilion and its environs.

Pavilion has been photographed at various intervals throughout the day, allowing people to experience subtle nuances in the play of light on Gardam's furniture and lamps in situ. In doing so, this displays the sculptural appeal of the lamps during the day when switched off, as well as the various moods and types of light they emit in the evening when illuminated. The internal images were taken early in the morning when fog engulfed Pavilion. External images were taken in full afternoon sun, followed by more intimate lighting in photos taken at dusk.

Created in tandem with Melbourne-based digital agency Mr.P, Pavilion is intended as inspiration for any space, scenario, interior or exterior envisioned for Gardam's designs.







01

CETO CLUSTER

Ceto captures the variation and rippling of the surface of the ocean. Each piece reflects a unique pattern, emitting a delicate luminosity, highlighting the presence of the sea.



02

HEARTH LOFT



Hearth Loft's refined form, opulent proportions and superbly crafted structure represents a new stylish and intelligent lounging system for your space.







03

NEBULAE



The Nebulae Collection takes its name from the natural phenomena of interstellar clouds and their dynamic layered lighting effects. The geometric machined forms coupled with the fluid glass discs create balance between the elements.

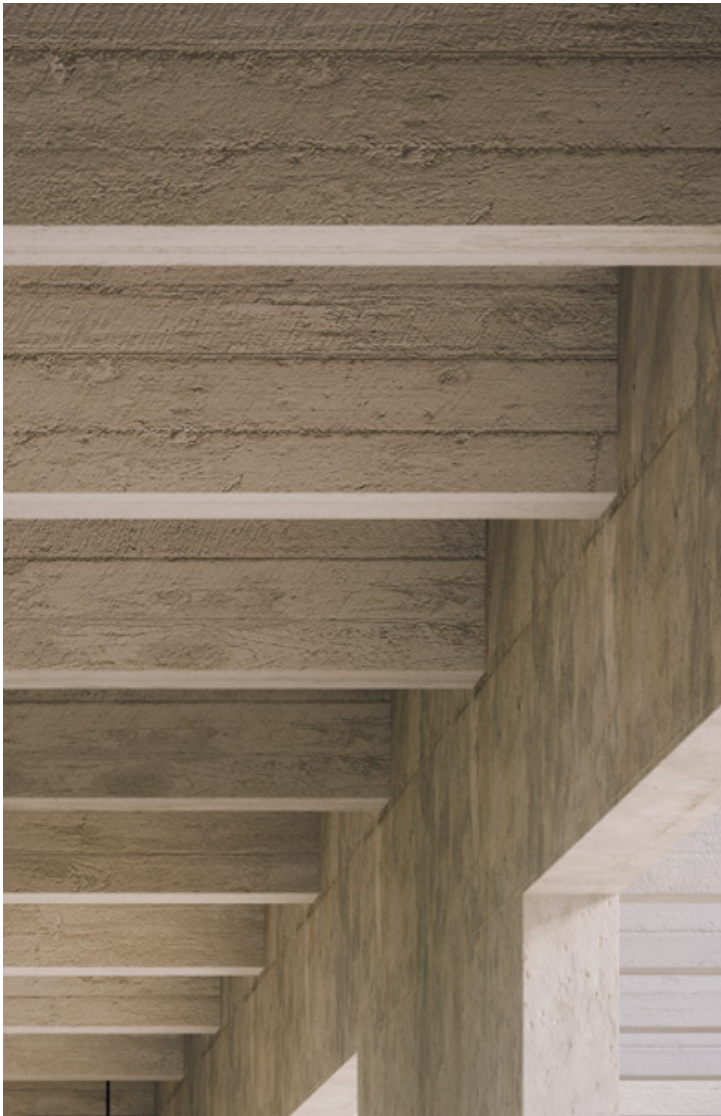


04

HEARTH CLASSIC

The Hearth Classic Lounge is the new heart of your home, a lounging system designed for flexible living. Inspired by our popular Place collection, Hearth features generous proportions perfect for lounging while its modular nature allows it to fit and complement any space.







Sculptural and captivating all at once, Ceto's silhouette is a result of a series of experimentations with traditional optic glass blowing techniques and innovative engineering. Through the process of blowing, each light achieves its own unique glass effect.



06

NOON

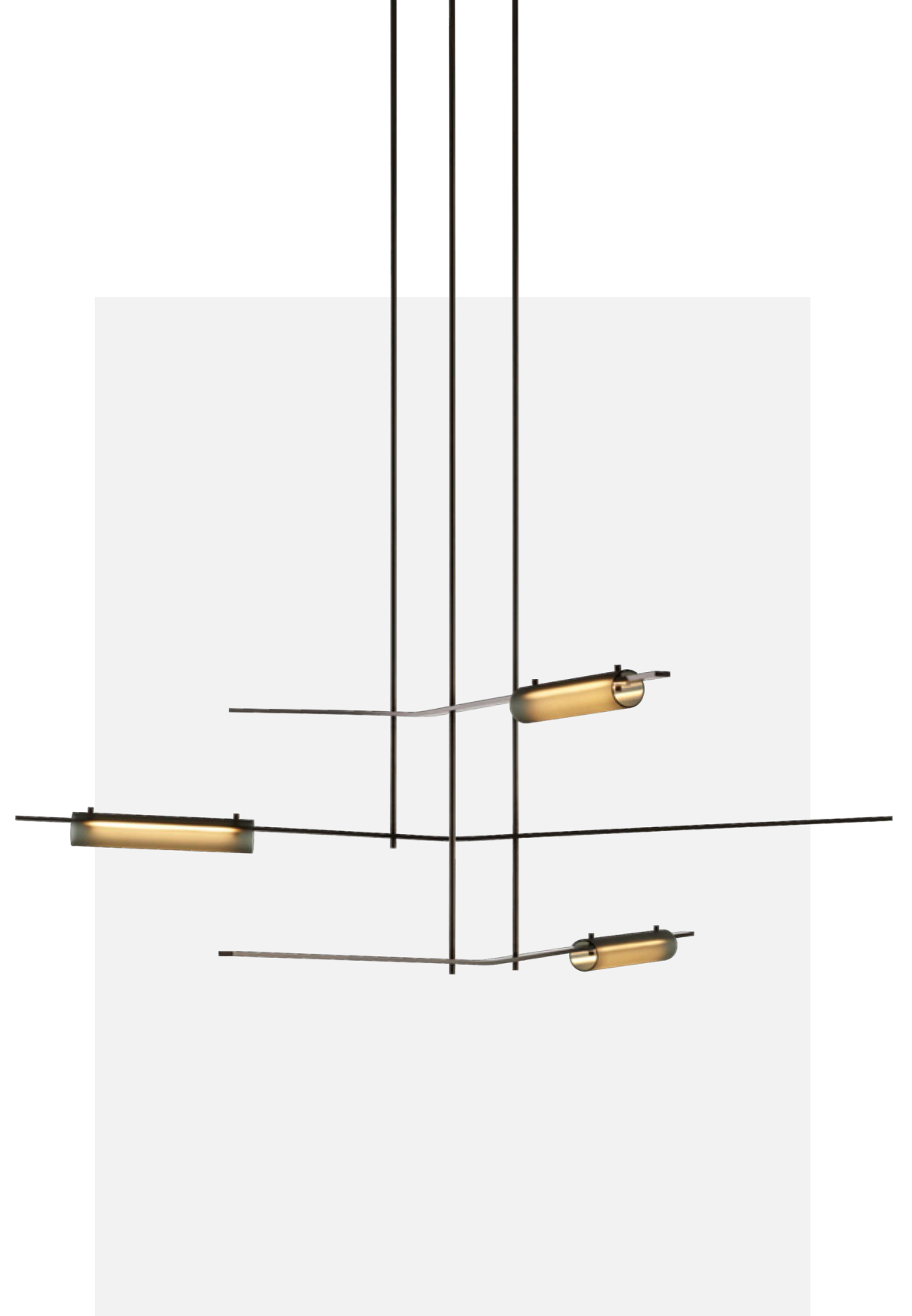


The Noon Lounge is a modular collection of upholstered products, which softly arc at the edges. Noon's arm sits elegantly in place, allowing the cushion to flow over the curve, imbuing the lounging experience with an extra level of comfort and softness.





Volant is a modern chandelier that's almost akin to a kinetic sculpture. A static lamp with a mystifying ability to appear in motion. Solid brass bars are home to textured, tubular formed glass elements, angled to give the impression of floating objects revolving around each other. The result is an elegant equilibrium that's at once enthralling yet soothing.



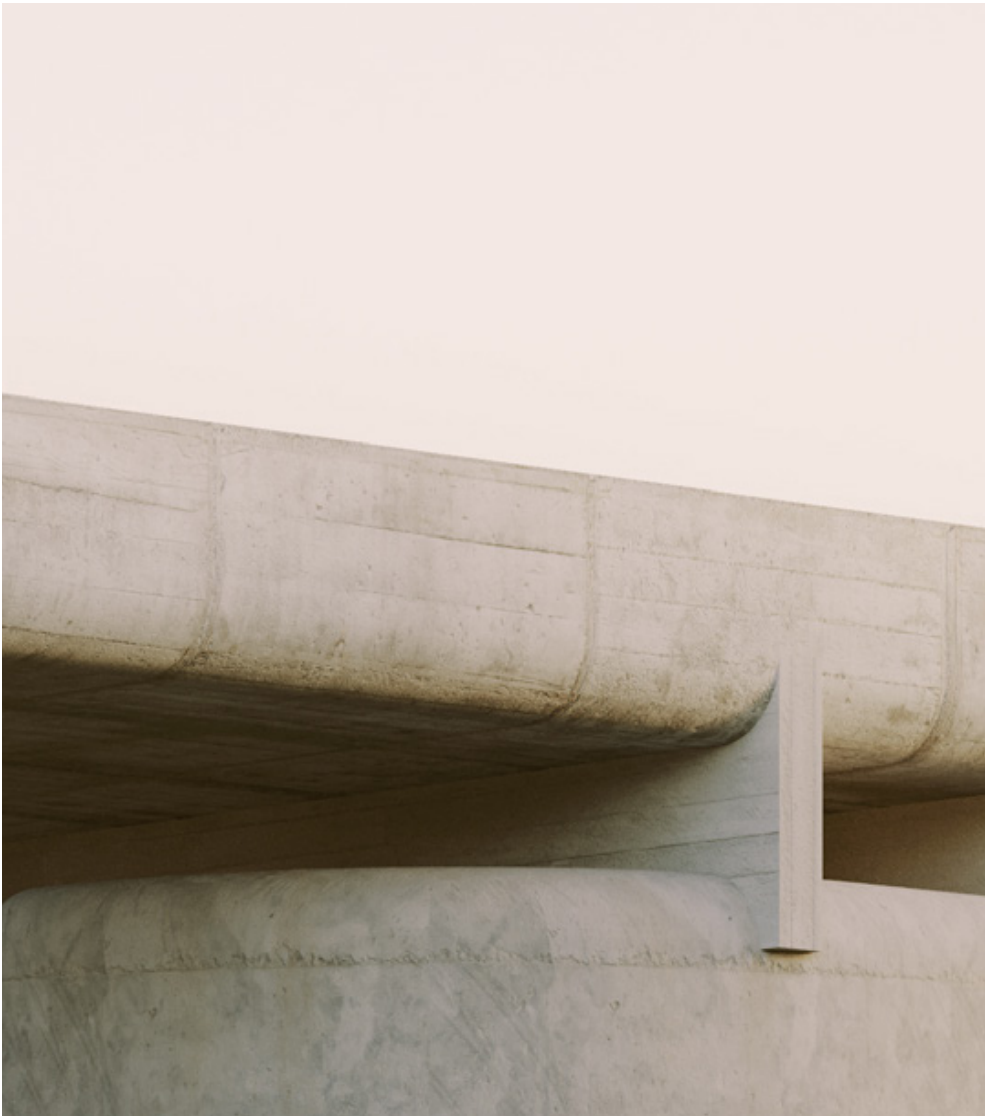


Méne celebrates our sense of awe of the celestial. The pendant appears like a lunar apparition, delicately floating in mid-air. Crafted with mouth blown glass, the collection reveals the individual and unique texture of subtly illuminated glass.









IMAGINED BY
Ross Gardam

IMAGERY
MrP Studio
& Haydn Cattach

DESIGN
SouthSouthWest

WORDS
Julie at nativecreative.agency
& Andy Sargent

TYPEFACES
Favorit Std
Editorial New

CONTACT
334 Victoria Street
Brunswick - Melbourne
Victoria, Australia
+61 (0) 3 9329 4145
sales@rossgardam.com.au
rossgardam.com.au

ROSS GARDAM

Copyright ©2023 Ross Gardam pty ltd. All concepts, photography, images and ideas contained within this document are private and confidential.They must not be reproduced in any way or form and remain the intellectual property of Ross Gardam. All products are registered designs with IP Australia.



ROSS GARDAM